

# PGE Series Slim-type Electric Parallel Gripper

PGE-2-12 PGE-15-10  
PGE-5-26 PGE-15-26  
PGE-8-14 PGE-50-26

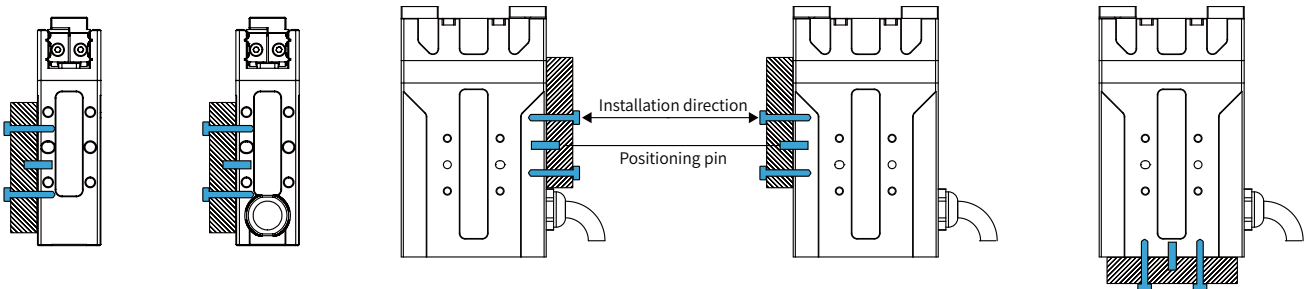


The PGE series is an industrial slim-type electric parallel gripper. With its precise force control, compact size and highly working speed, it has become a 'Hot sell product' in the field of industrial electric gripper.



## Installation

1. Front and rear installation: use front and rear screw holes for installation
2. Side installation: use side screw holes for installation
3. Bottom installation : use bottom screw holes for installation



## Product Features

### ● Small Size | Flexible Installation

The thinnest size is 18 mm with compact structure, supports at least five flexible installation methods to meet the needs of clamping tasks & saves design space.

### ● High Working Speed

The fastest opening and closing time can reach 0.2 s / 0.2 s, which can meet the high-speed and stable clamping requirements of the production line.

### ● Precise Force Control

With special driver design and driving algorithm compensation, the gripping force is continuously adjustable, and the force repeatability could reach 0.1 N.

\* For more information, please contact our sales.

## Application

For scenarios requiring force control or flexibility, such as assembly, sorting and loading and unloading in semiconductor, 3C electronics, medical automation and other industries.



## Parameters

Product Parameter	
Gripping force (per jaw)	0.8~2 N
Stroke	12 mm
Recommended workpiece weight *	0.05 kg
Opening/Closing time	0.2 s/0.2 s
Repeat accuracy (position)	± 0.02 mm
Noise emission	< 40 dB
Weight	0.15 kg
Driving method	Rack and pinion + Cross roller guide
Size	65 mm x 39 mm x 18 mm
Working Environment	
Communication interface	Standard: Modbus RTU (RS485), Digital I/O Optional: TCP/IP, USB2.0, CAN2.0A, PROFINET, EtherCAT
Rated voltage	24 V DC ± 10%
Rated current	0.2 A
Peak current	0.5 A
IP class	IP 40
Recommended environment	0~40°C, under 85% RH
Certification	CE, FCC, RoHS
<input type="checkbox"/>	<input type="checkbox"/>
<input type="checkbox"/>	<input type="checkbox"/>
<input type="checkbox"/>	<input type="checkbox"/>
<input type="checkbox"/>	<input type="checkbox"/>
<input type="checkbox"/>	<input type="checkbox"/>
<input type="checkbox"/>	<input type="checkbox"/>
Build-in Controller	Gripping Force Adjustable
Position Adjustable	Speed Adjustable
Drop Detection	Self-locking Mechanism



### Vertical Maximum Force

**Fz:** 35 N

### Allowable Moment

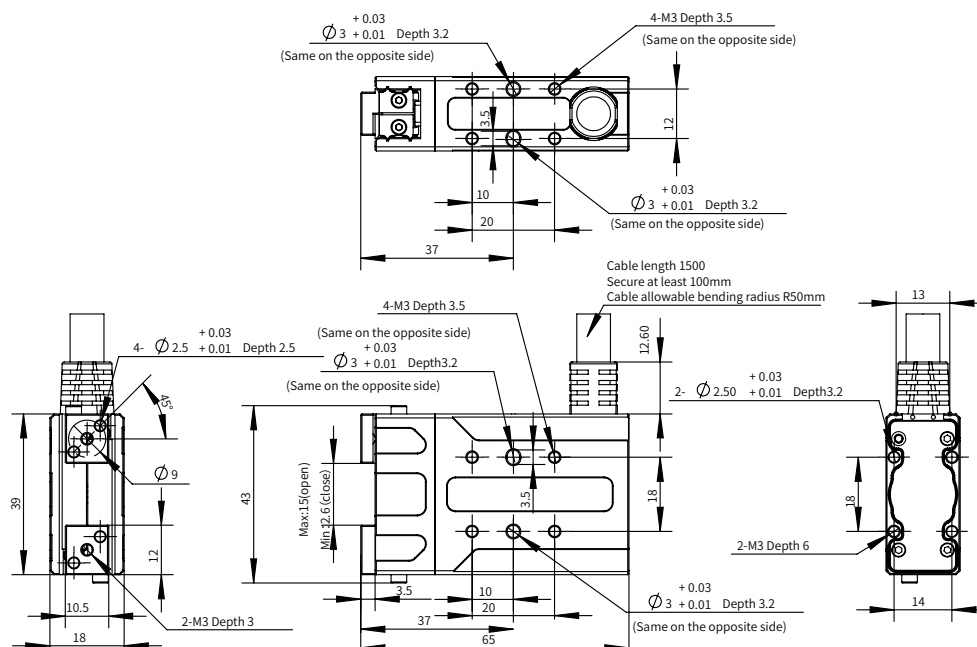
**Mx:** 0.2 N·m

**My:** 0.17 N·m

**Mz:** 0.2 N·m

\*It depends on the shape of the grasping object, the material and friction of the contact surface, and the acceleration of the motion, if you have any questions, please contact us.

## Technical Drawings



## Parameters

Product Parameter	
Gripping force (per jaw)	0.8~5 N
Stroke	26 mm
Recommended workpiece weight *	0.1 kg
Opening/Closing time	0.2 s/0.2 s
Repeat accuracy (position)	± 0.02 mm
Noise emission	< 40 dB
Weight	0.4 kg
Driving method	Rack and pinion + Cross roller guide
Size	95 mm x 55 mm x 26 mm
Working Environment	
Communication interface	Standard: Modbus RTU (RS485), Digital I/O Optional: TCP/IP, USB2.0, CAN2.0A, PROFINET, EtherCAT
Rated voltage	24 V DC ± 10%
Rated current	0.4 A
Peak current	0.7 A
IP class	IP 40
Recommended environment	0~40°C, under 85% RH
Certification	CE, FCC, RoHS
<input checked="" type="checkbox"/> Build-in Controller	<input checked="" type="checkbox"/> Gripping Force Adjustable
<input checked="" type="checkbox"/> Position Adjustable	<input checked="" type="checkbox"/> Speed Adjustable
<input checked="" type="checkbox"/> Drop Detection	<input type="checkbox"/> Self-locking Mechanism



### Vertical Maximum Force

**Fz:** 50 N

### Allowable Moment

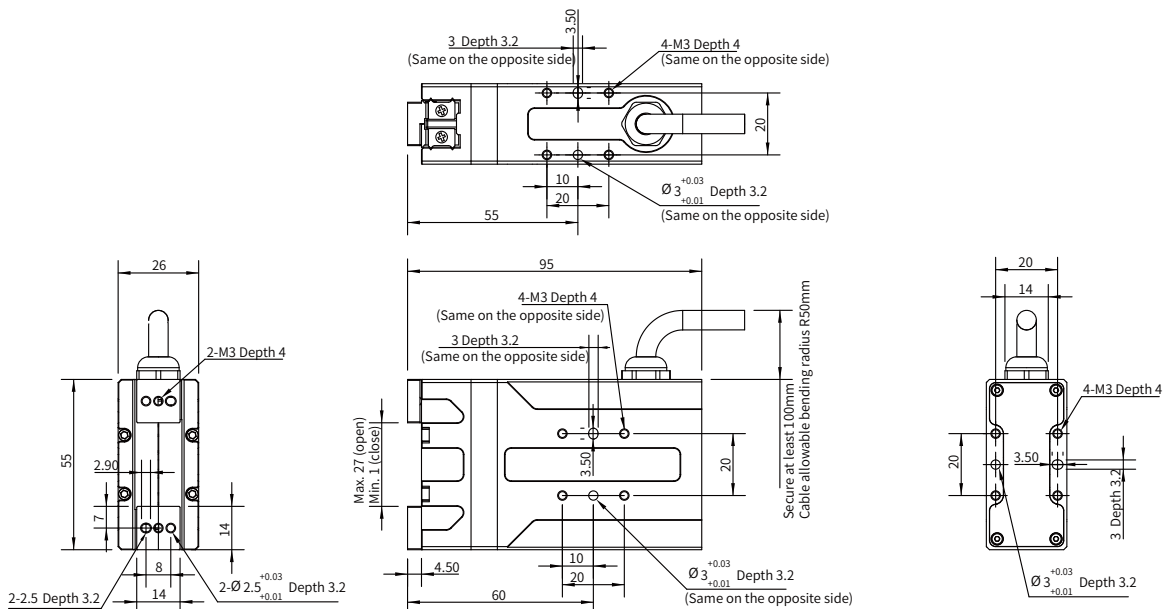
**Mx:** 0.3 N·m

**My:** 0.25 N·m

**Mz:** 0.3 N·m

\*It depends on the shape of the grasping object, the material and friction of the contact surface, and the acceleration of the motion, if you have any questions, please contact us.

## Technical Drawings



This drawing is for the gripper without the brake, please kindly note. If need the the drawing for the gripper with brake, please contact our sales.

## Parameters

Product Parameter	
Gripping force (per jaw)	2~8 N
Stroke	14 mm
Recommended workpiece weight *	0.1 kg
Opening/Closing time	0.2 s/0.2 s
Repeat accuracy (position)	± 0.02 mm
Noise emission	< 40 dB
Weight	0.4 kg
Driving method	Rack and pinion + Liner guide
Size	97 mm x 62 mm x 31 mm
Working Environment	
Communication interface	Standard: Modbus RTU (RS485), Digital I/O Optional: TCP/IP, USB2.0, CAN2.0A, PROFINET, EtherCAT
Rated voltage	24 V DC ± 10%
Rated current	0.4 A
Peak current	0.7 A
IP class	IP 40
Recommended environment	0~40°C, under 85% RH
Certification	CE, FCC, RoHS
<input checked="" type="checkbox"/> Build-in Controller	<input checked="" type="checkbox"/> Gripping Force Adjustable
<input checked="" type="checkbox"/> Position Adjustable	<input checked="" type="checkbox"/> Speed Adjustable
<input checked="" type="checkbox"/> Drop Detection	<input type="checkbox"/> Self-locking Mechanism



### Vertical Maximum Force

**Fz:** 90 N

### Allowable Moment

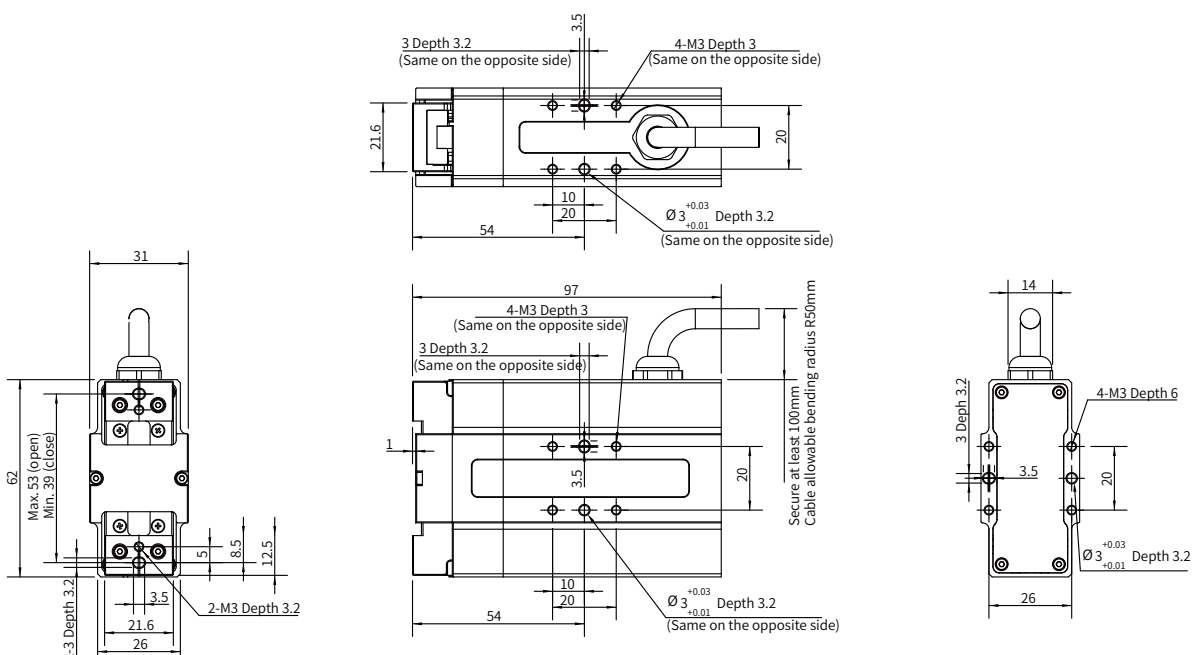
**Mx:** 0.55 N·m

**My:** 0.45 N·m

**Mz:** 0.55 N·m

\*It depends on the shape of the grasping object, the material and friction of the contact surface, and the acceleration of the motion, if you have any questions, please contact us.

## Technical Drawings



## Parameters

Product Parameter	
Gripping force (per jaw)	6~15 N
Stroke	10 mm
Recommended workpiece weight *	0.25 kg
Opening/Closing time	0.25 s/0.25 s
Repeat accuracy (position)	± 0.01 mm
Noise emission	< 60 dB
Weight	0.155 kg
Driving method	Precise planetary gears + Rack and pinion
Size	89 mm x 30 mm x 18 mm
Working Environment	
Communication interface	Standard: Modbus RTU (RS485), Digital I/O Optional: TCP/IP, USB2.0, CAN2.0A, PROFINET, EtherCAT
Rated voltage	24 V DC ± 10%
Rated current	0.1 A
Peak current	0.22 A
IP class	IP 40
Recommended environment	0~40°C, under 85% RH
Certification	CE, FCC, RoHS
<input type="radio"/>	Build-in Controller
<input checked="" type="radio"/>	Gripping Force Adjustable
<input checked="" type="radio"/>	Position Adjustable
<input checked="" type="radio"/>	Speed Adjustable
<input checked="" type="radio"/>	Drop Detection
<input type="radio"/>	Self-locking Mechanism



### Vertical Maximum Force

**Fz:** 35 N

### Allowable Moment

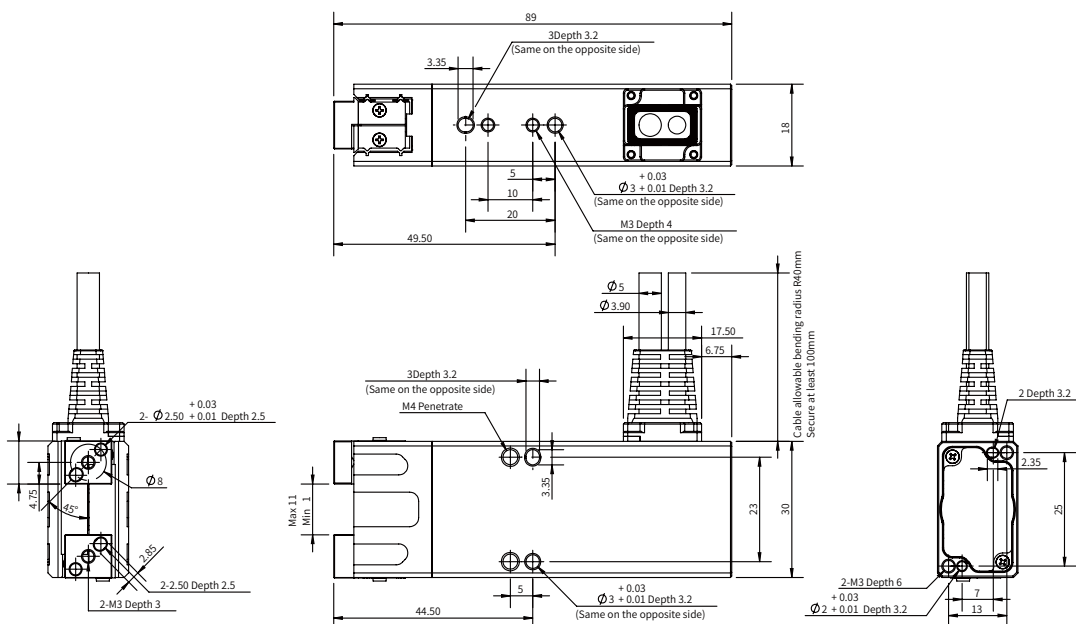
**Mx:** 0.45 N·m

**My:** 0.4 N·m







**Mz:** 0.45 N·m

\*It depends on the shape of the grasping object, the material and friction of the contact surface, and the acceleration of the motion, if you have any questions, please contact us.

## Technical Drawings



## Parameters

Product Parameter					
Gripping force (per jaw)	6~15 N				
Stroke	26 mm				
Recommended workpiece weight *	0.25 kg				
Opening/Closing time	0.4 s/0.4 s				
Repeat accuracy (position)	± 0.02 mm				
Noise emission	< 40 dB				
Weight	0.33 kg				
Driving method	Precise planetary gears + Rack and pinion				
Size	86.5 mm x 55 mm x 26 mm				
Working Environment					
Communication interface	Standard: Modbus RTU (RS485), Digital I/O Optional: TCP/IP, USB2.0, CAN2.0A, PROFINET, EtherCAT				
Rated voltage	24 V DC ± 10%				
Rated current	0.25 A				
Peak current	0.5 A				
IP class	IP 40				
Recommended environment	0~40°C, under 85% RH				
Certification	CE, FCC, RoHS				
					
Build-in Controller	Gripping Force Adjustable	Position Adjustable	Speed Adjustable	Drop Detection	Self-locking Mechanism



### Vertical Maximum Force

**Fz:** 70 N

### Allowable Moment

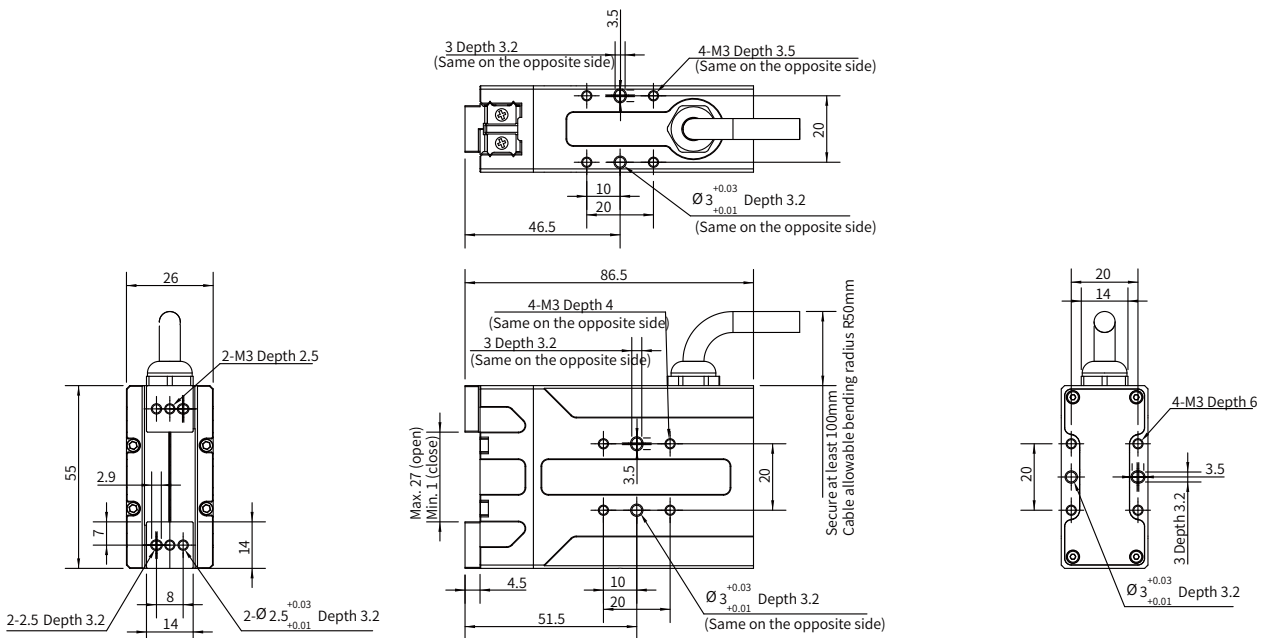
**Mx:** 0.9 N·m

**My:** 0.75 N·m

**Mz:** 0.9 N·m

\*It depends on the shape of the grasping object, the material and friction of the contact surface, and the acceleration of the motion, if you have any questions, please contact us.

## Technical Drawings



This drawing is for the gripper without the brake, please kindly note. If need the the drawing for the gripper with brake, please contact our sales.

## Parameters

Product Parameter	
Gripping force (per jaw)	15~50 N
Stroke	26 mm
Recommended workpiece weight *	1 kg
Opening/Closing time	0.3 s/0.3 s
Repeat accuracy (position)	± 0.02 mm
Noise emission	< 40 dB
Weight	0.4 kg
Driving method	Precise planetary gears + Rack and pinion
Size	97 mm x 55 mm x 29 mm
Working Environment	
Communication interface	Standard: Modbus RTU (RS485), Digital I/O Optional: TCP/IP, USB2.0, CAN2.0A, PROFINET, EtherCAT
Rated voltage	24 V DC ± 10%
Rated current	0.25 A
Peak current	0.5 A
IP class	IP 40
Recommended environment	0~40°C, under 85% RH
Certification	CE, FCC, RoHS
<input checked="" type="checkbox"/> Build-in Controller	<input checked="" type="checkbox"/> Gripping Force Adjustable
<input checked="" type="checkbox"/> Position Adjustable	<input checked="" type="checkbox"/> Speed Adjustable
<input checked="" type="checkbox"/> Drop Detection	<input type="checkbox"/> Self-locking Mechanism



### Vertical Maximum Force

**Fz:** 150 N

### Allowable Moment

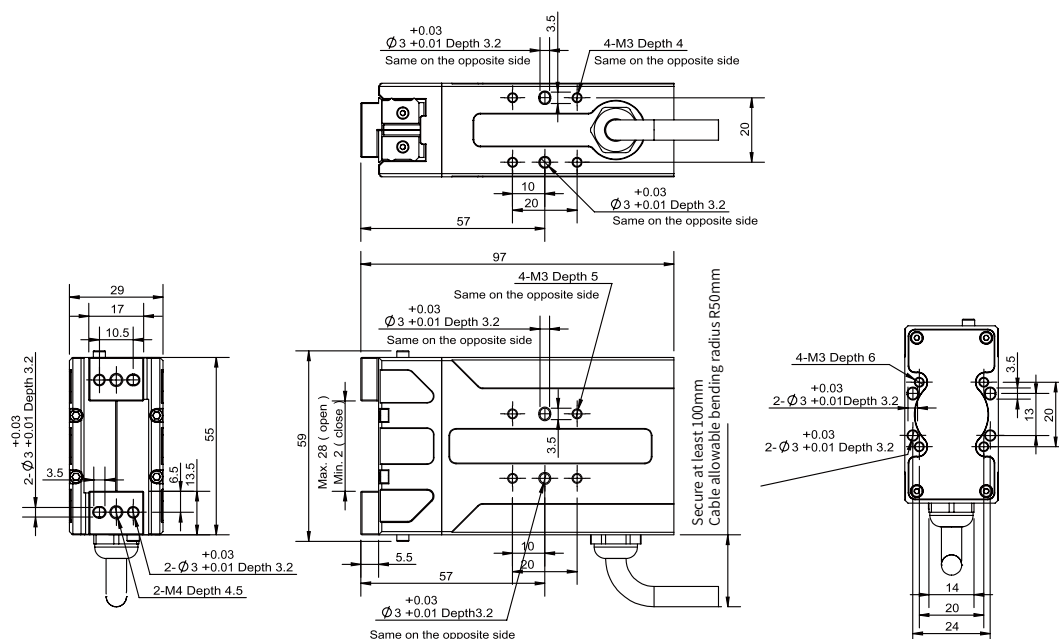
**Mx:** 2.5 N·m

**My:** 2 N·m

**Mz:** 3 N·m

\*It depends on the shape of the grasping object, the material and friction of the contact surface, and the acceleration of the motion, if you have any questions, please contact us.

## Technical Drawings



This drawing is for the gripper without the brake, please kindly note. If need the drawing for the gripper with brake, please contact our sales.